



Wilts & Berks Canal Trust

Patron: The former Duchess of Cornwall

Restoring all 70 miles of the Wilts & Berks Canal to create a tranquil public waterside park for walking, cycling, fishing and boating

About Us

Wilts & Berks Canal Trust (the Trust) have been restoring the historic Wilts and Berks canal since 1977. We are a Wildlife & Environmental Conservation charity committed to enhancing our natural heritage by championing biodiversity, community engagement, wellbeing, and education. Our objective is that by 2035 we will have restored the entire 112km length of the canal to create a tranquil, biodiverse waterside park, whilst sustaining and enhancing the natural environment.

We are taking traditional restoration work and interweaving through strong themes of habitat enhancement and community engagement. Our aim is to create a sustainable and biodiverse blue-green corridor as it winds through our region, creating a thriving and sustainable socio-environmental asset which provides a host of attractive lifestyle and economic benefits, not only to our communities and visitors, but also provides a safe and welcoming habitat for wildlife.

Wilts & Berks Canal Trust (the Trust) is moving into an exciting phase of its regeneration, at a time when preserving the UK's countryside and natural resources has never been more important for everyone's mental and physical health.

The Project

We are rebuilding the old carpenter's workshop that was located at our Pewsham site in Wiltshire.

The reinstated carpenter's workshop will provide a fantastic resource for the local community. We intend to:

- Deliver classes in traditional carpentry, using a mix of modern and model tools for those aged 16+.
- Deliver classes to adults in environmental science.
- Provide classes to school children on nature and the environment, utilising the mini lake, which is located close by, as well as surrounding hedgerows and trees.
- Provide demonstrations in crafts / life skills to those aged 19+.
- Offer the building to the local community for meetings / events.
- Work in conjunction with Men's Shed organisation and offer the building to this group for weekly meetings / activities.

Project Drawing

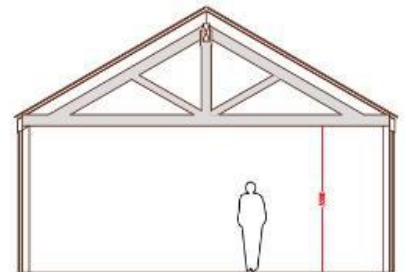
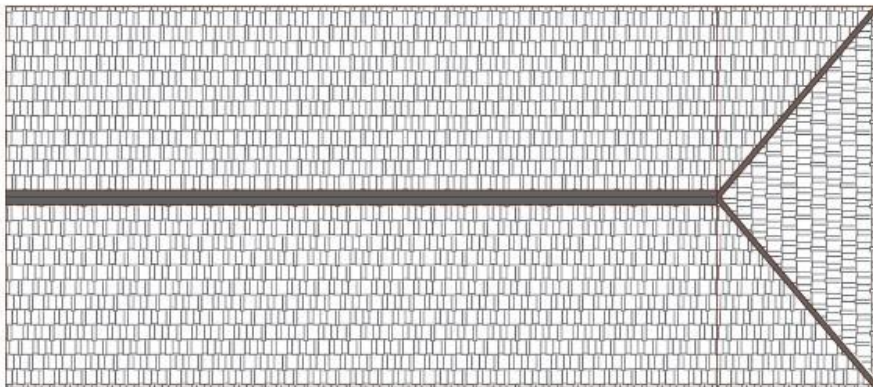
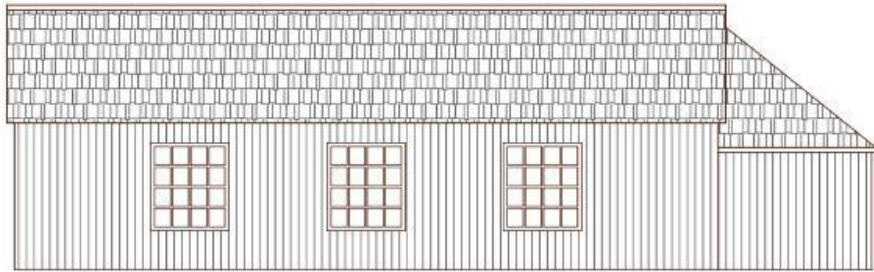
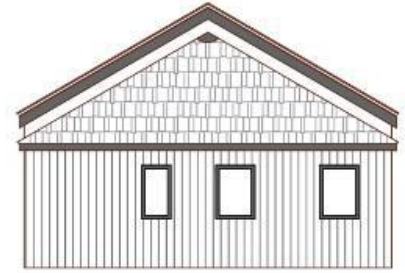
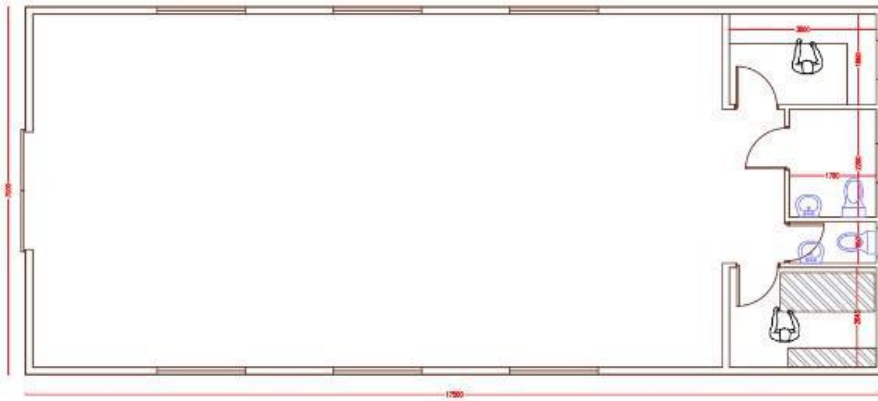


Wilts & Berks Canal Trust, Dauntsey Lock Canal Centre, Dauntsey Lock,
Chippenham. SN15 4HD

Charity No: 299595 Tel: 0845 625 1977 E-mail: info@wbct.org.uk

Web Site: www.wbct.org.uk





Project Delivery

We have commissioned a designer to produce working drawings that will allow us to erect the workshop. It has taken months carrying out researching, as there is nothing left on the ground, as to what it may have looked like, how we are going to disguise modern fitments, such as projector and screen bracketry, in what will eventually be a mid-1800s workshop.

We have spoken with local supplier re the challenge of getting cement pumped 30m from the nearest access point to create a solid and insulated floor on which we can recreate the brick floor for bricks salvaged on the site. We have also been planning the logistic of getting timber across the open site .We have continue to located local Welsh slate for the roof, from those who are refurbishing properties and discussed how best to hide solar panels. Learned about composting toilets and how to disguise the toilet and kitchen area in a lean to hidden behind an old worn door.

Lots of research and logistical problems have been solved however to date no construction, drawings currently being created, and therefore no updated images.

We have very good working relationships built up over many years with several suppliers and any issues are sorted out quickly and efficiently and get us back working in the minimum amount of time. The plan is to have the timber

frame created off site for volunteers to erect on site. Working with the designer we are able to create a fully insulated building but clever design techniques will allow volunteers to hide the modern insulation and make the workshop look as it might have done in the mid 1800;s. Volunteers are already collecting old tools of the type used in carpenter's workshops of the era.

Although the main area of the carpenter's workshop will show an interior as it was between 1840-1900 we plan also to use the space as a classroom. Hidden behind the end wall will be two toilets, store room and a kitchen area.

Estimated volunteers hours are 550 for all works, including landscaping at a value of £18,850 which benefits excellent value. There is nothing left of the structure, but we have used old Tithe maps and modern maps overlaid to pinpoint the centre of the structure and used the same maps and scales from an existing structure to give us the size of the carpenter's workshop.

Project Impacts

All our projects are designed to address key environmental and social needs, as identified in the 2019 Wiltshire Swindon & Oxfordshire Canal Partnership strategy, available at: www.canalpartnership.org.uk

We are helping to bring together local communities, creating a 'shared' ownership of the surrounding environment as well as creating a valuable educational resource. We regularly engage with local schools and activity groups to deliver engaging, biodiversity educational days. We are passionate about promoting outdoor learning, providing access to local heritage and creating opportunities for local participation in conservation.

The project will benefit indirectly around 1,000 people and directly around 52 volunteers. We have 700 members in our branch and 52 active volunteers, many of whom attend work parties three days a week and/or two weekends a month.

Our project will also benefit the wider Chippenham community by providing opportunities to access educational courses, training, providing volunteering opportunities (which improves health, wellbeing and reduces isolation), as well as benefiting from the improvements made to their local stretches of canal that they and their families enjoy visiting.

Monitoring Success

We continuously gather feedback from our volunteers about how they experience supporting the Trust. With this project we would produce a short report to detail outputs, plus gather comments through the use of a survey of volunteers and the public. Using this information, we will produce a report which will include summary achievements and any areas which require improvement.

We have mentioned the immediate impact of our project, however our overall work helps our local communities and environment in other ways, which we have included details of for your information.

Budget

We have secured 2/3 of the total budget so far including a grant received for £5,000 from the Nineveh Trust. We are actively seeking to raise the remainder from trusts and foundations.

A	B	C	D
Charity / Trust	Purpose of Grant	Amount Awarded	Date Awarded
The Nineveh CT	Pewsham Carpenters Workshop	£3,500.00	3rd March 2022
Chippenham Borough Lands Charity	Pewsham Carpenters Workshop	£10,000	19th April 2022
The Weinstock Fund	Pewsham Carpenters Workshop	£5,000	21st April 2022
The Banister CT (managed by Ludlow Trust)	Pewsham Carpenters Workshop	£20,000.00	28th July 2022
Communities First Landfill	Pewsham Carpenters Workshop	£10,000.00	22nd October 2022
The Hilary Awdry Charitable Trust	Pewsham Carpenters Workshop	£2,000.00	29th July 2022
		£50,500.00	
Target		£67,727.11	of which £11,574.99 is contingency
Amount to be raised		£17,227.11	

Material Costs					
Description	Unit	Quantity	Unit Price (£)	Total (£)	Contingency (£)
Access road and parking	Ea.	1	£2,400.00	£2,400.00	£552.00
Concrete base	Ea.	1	£7,200.00	£7,200.00	£1,656.00
Base insulation	Ea.	1	£2,400.00	£2,400.00	£552.00
Building shell and roof (10,000 raised)	Ea.	1	£31,392.71	£31,392.71	£ 7,220.32
Electrical fittings	Ea.	1	£999.14	£ 999.14	£229.80
Capture and storage of rainwater	Ea.	1	£558.43	£558.43	£ 128.44
Plumbing and drainage	Ea.	1	£547.44	£547.44	£125.91
Kitchen fittings	Ea.	1	£974.40	£974.40	£224.11
Composting toilets	Ea.	2	£840.00	£1,680.00	£386.40
Solar tiles tbc				£5,000.00	£500.00
Materials Sub Total				£53,152.12	
Contingency Sub Total					£11,574.99
Materials Total					£64,727.11

Project Timetable

We have been delayed starting this project due to time it has taken to receive grants. The majority of grants do not get awarded to projects already started so we have had to pause until sufficient capital was reached. We will be receiving the concrete on site at the end of March 23, currently the volunteers are preparing the ground for the early stage construction.

The outline timeline and budget for this project for 2023 are included below:

Quarter	Key actions
Jan to March	Concrete ordered and delivered to site Pre cut timber delivered and shell frame constructed Volunteers on site to prepare ground and support the early stage construction
April to June	Internal development of the construction using 1800 century equipment Design and sourcing of tools and memorabilia Kitchen area fit out Volunteers on site to support the internal works and prepare for promotion and launch
July to Sept	Planning and marketing of launch event due to take place in July/Aug Timetabling of workshops and meeting with schools to book sessions

	Volunteers lined up to deliver some of the workshops
Oct to Dec	Delivery of workshops Evaluation and reporting to funders Recruitment of paid workshop facilitators where needed

Testimonials from our volunteers

"I loved helping to plant the trees and spend the day by the canal" Jody, 10th Chippenham Scouts.

"Working with you guys in the countryside has helped me to talk to my daughter about my problems for the very first time" Simon, RAF Veteran on Help For Heroes placement.

"The kids loved being involved and, they don't know it now, but being involved with this heritage will stay with them for ever" Bob, Scout Leader.

"I am really interested in the industrial archeology aspect. I have had a great day and plan to volunteer" Chris, Corporate Day Volunteer.

"To preserve heritage for future generations and hopefully make my family proud of what we achieved. It's my gym" Dave, Branch Volunteer.

**Please come on board with Wilts & Berks Canal Trust.
Be part of this inspiring and transformational journey.**